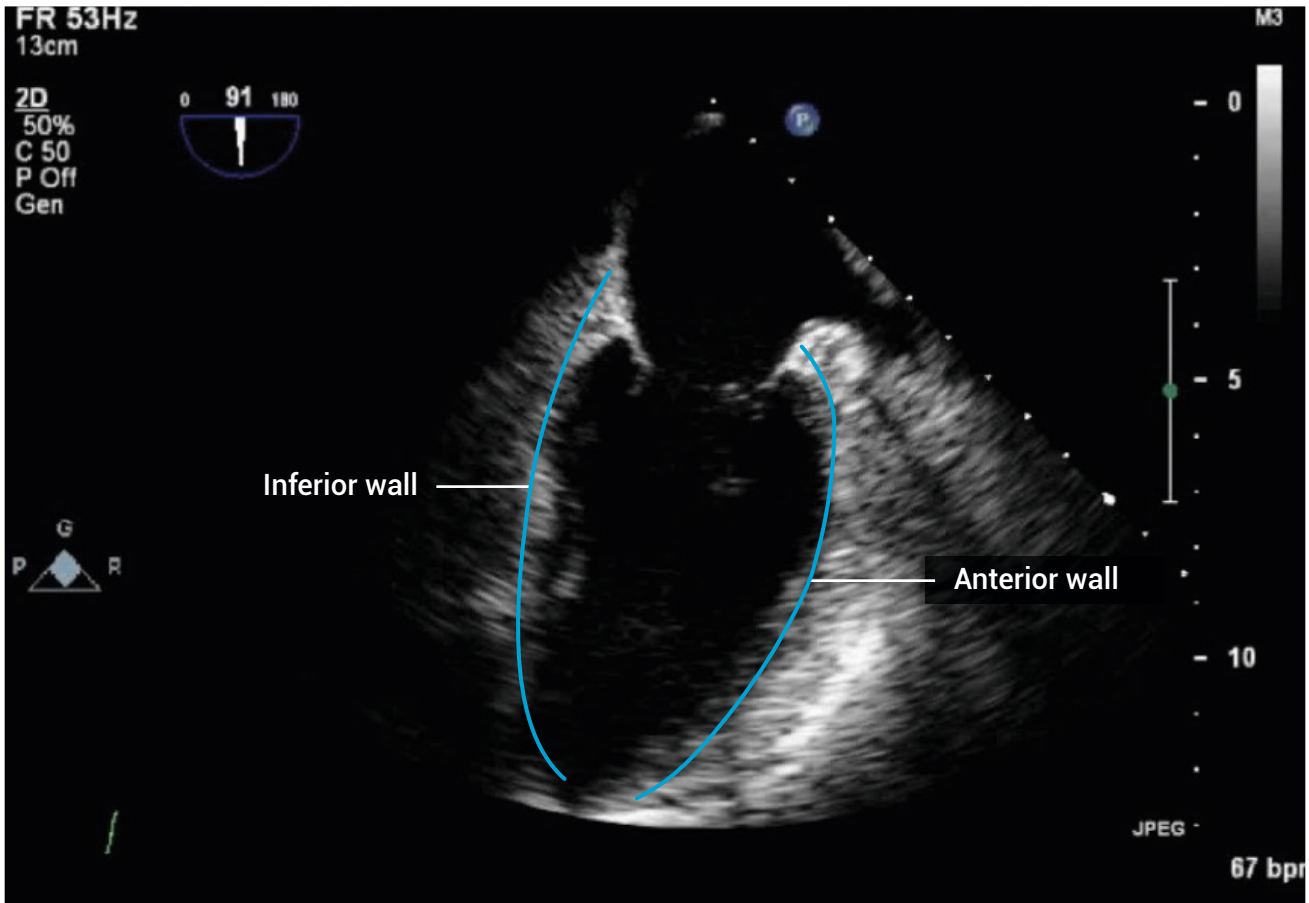


# TEE ESSENTIALS

## Assessment of the left ventricle: Mid-esophageal two-chamber view

This TEE view is obtained at the mid-esophageal level, using a transducer angle of 80-100°. In this view, the inferior and anterior walls of the left ventricle can be assessed for regional motion.



### Measurements

In this view, it is possible to measure the left ventricular internal diameter (LVID) at the junction of the basal and mid thirds of the chamber, at end-diastole (LVIDd) and at end-systole (LVIDs). However, it is generally preferable to use the transgastric views for these measurements where possible. The normal ranges are as follows:

	Male	Female
LVIDd (cm)	4.2–5.8	3.8–5.2
LVIDs (cm)	2.5–4.0	2.2–3.5

### Further reading

Lang RM, Badano LP, Mor-Avi V, et al. 2015. Recommendations for cardiac chamber quantification by echocardiography in adults: an update from the American Society of Echocardiography and the European Association of Cardiovascular Imaging. *J Am Soc Echocardiogr.* **28**: 1–39.